



APPLICATION:

Oval sight glass fittings are used for observation and illumination of the inside of closed vessels (boilers, tanks, silos, etc.).

Sight glass fittings type 335 are oval longitudinal sight glass fittings for welding in or on, each completed with a sight glass plate inserted between the gaskets and screwed firmly.

INSTALLATION NOTE:

After welding the base frame to the pressure vessel, check whether the sealing surface has warped. Reworking may be required! Also observe the specified torques for the screw connections according to the operation and maintenance manual!

The operating pressure does not apply to the base frame, this must be verified together with the pressure vessel according to AD 2000 instruction leaflet B9 or equivalent code!

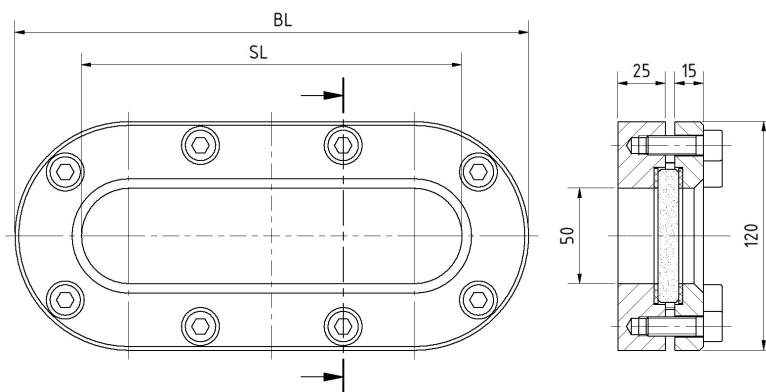
**Lightweight version
with 50 mm
vision panel**

Operating conditions:

Temperature: up to **280°C** with Borosilicate glass transparent similar to DIN 7081

Pressure: ≤3 bar(g)

Higher temperatures on request



Materials:

Frame: 1.4571, 1.4404

Glass: Borosilicate glass transparent similar to DIN 7081

Gasket: ¹ PTFE; FKM; NBR; C4400; Silicone; EPDM; Graphite

Screws: A4-70

Special materials on request
¹ see INFO gaskets-leaflet

BL [mm]	270	340	410	480	550	620	690	760
SL [mm]	200	270	340	410	480	550	620	690
Weight [kg]	6,3	7,9	9,5	11,1	12,7	14,2	15,8	17,4

PRODUCTCODE:

Group	TYPE	overall length	Base frame*	Glass	Gasket	Variant
11	335	270 340 410 480 550 620 690 760	2: 1.4571 3: 1.4404 8: Special	1: Borosilicate glass (Boro) transparent similar to DIN 7081 6: Special	1: PTFE 2: FKM 3: NBR 4: C4400 5: Silicone 6: EPDM 7: Graphite 8: Special	Assigned by ACI if required

INFO: Unless otherwise stated, the factory standard highlighted is supplied.

*Cover frame according to quotation / order confirmation.

SPECIAL DESIGNS / OPTIONS:

- a) High temperature version on request
- b) Nearly cavity-free design on request
- c) Other options on request

EXAMPLE:

11-335-480-2-1-4-000 equivalent to:

ACI Type 335

480 mm overall length

Base frame made of 1.4571

Cover frame made of 1.4571

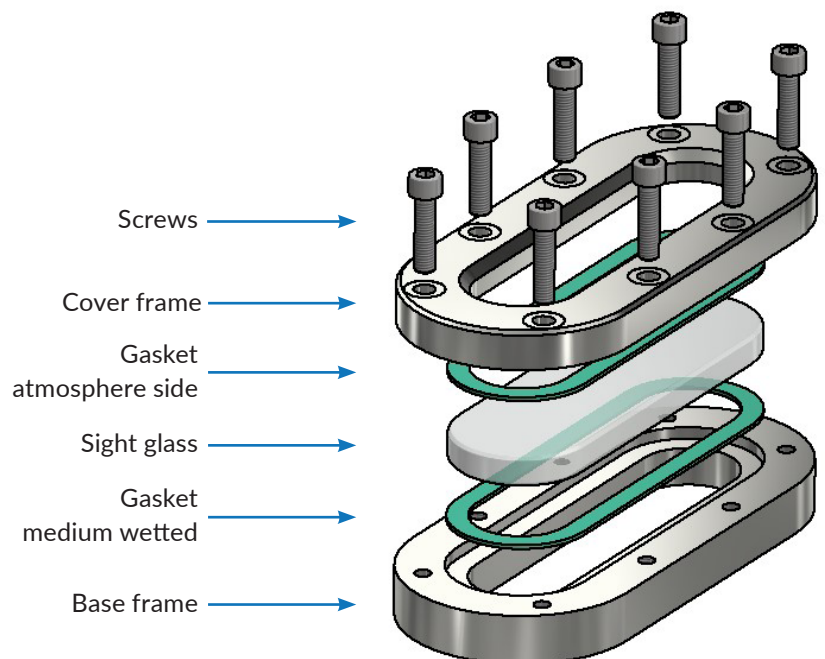
Borosilicate glass transparent, similar to DIN 7081

Gasket C4400

Standard design



Special design option b) with stepped glass



RECOMMENDATION:

For aggressive media or steam, mica discs should be used to protect the glass.